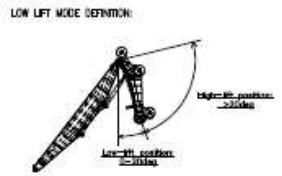
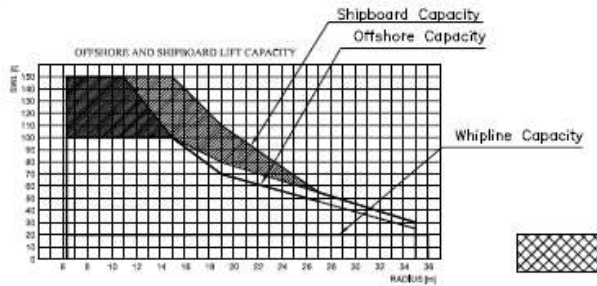
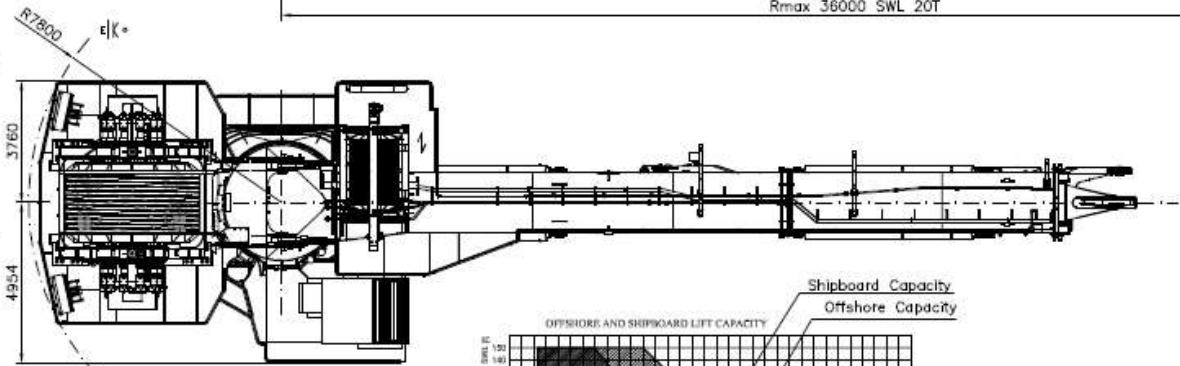
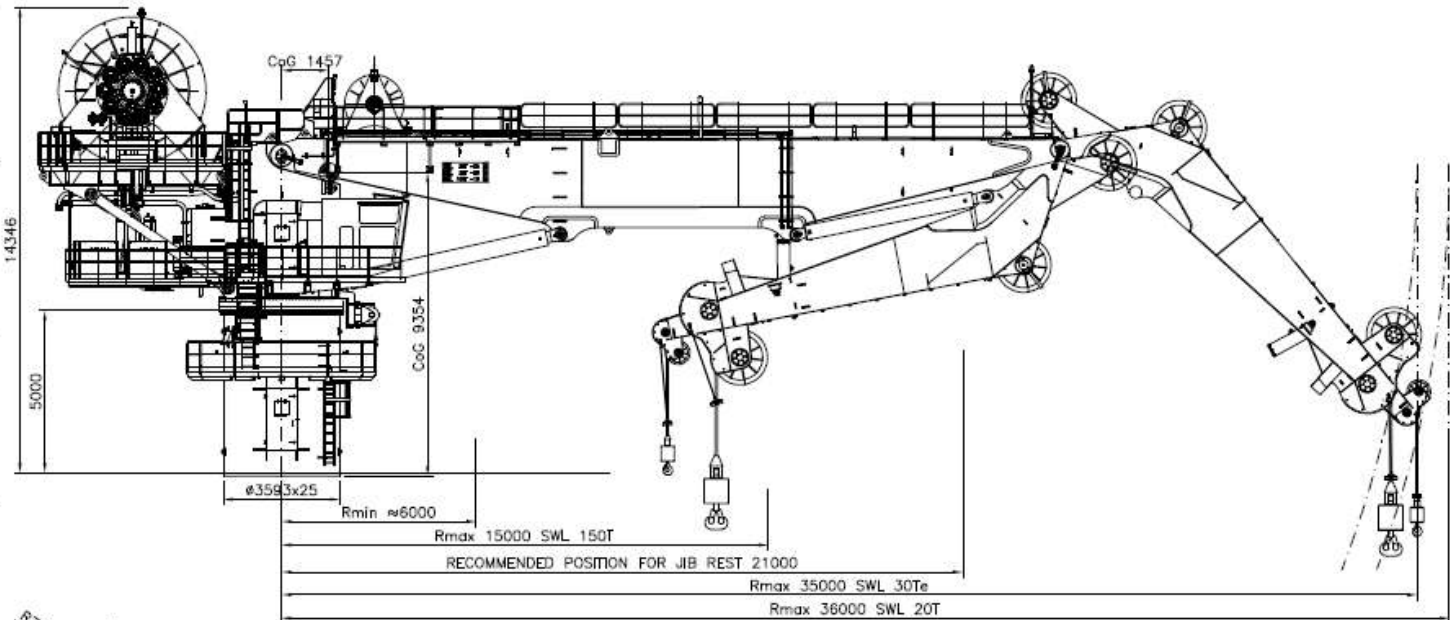


TYPICAL DRAWING  
- CHANGES MAY OCCUR

| ESTIMATED WEIGHT AND COG TABLE |            |                    |      |
|--------------------------------|------------|--------------------|------|
| NAME OF PART                   | WEIGHT ton | Coordinates: X + Y |      |
| FOUNDATION                     | 15.7       | 0.0                | 2.8  |
| KING ASSEMBLY                  | 73.2       | -0.9               | 6.4  |
| MAIN JIB                       | 48.2       | 10.                | 9.5  |
| KNUCKLE JIB                    | 24         | 19.5               | 6.8  |
| MAIN JIB CYLINDERS             | 15.7       | 5.2                | 6.6  |
| KNUCKLE JIB CYLINDERS          | 11.7       | 18.8               | 7.9  |
| MAIN WINCH                     | 75.7       | -4.6               | 11.6 |
| MAIN WINCH WIRE 3090m          | 89.0       | -4.6               | 11.8 |
| WW WIRE 2000m                  | 9.9        | 2.9                | 11.4 |
| GV                             | 5.9        | -                  | -    |
| TOTAL WEIGHT                   | 369.0      | 1.5                | 9.3  |



Axis definitions:  
 Origo located in pedestal center at shipdeck level.  
 x = parallel to jib  
 y = normal to ship deck  
 z = normal to jib

Estimated weight of the crane = 369 t  
 x = 1457mm  
 y = 9254mm  
 (CoG in stowed position as shown)

|  |               |      |
|--|---------------|------|
| Created by / Date:   | Scale/Format: | REV. |
|  | 1:100         |      |
| Project:   | Rev. no.      |      |
| GENERAL ARRANGEMENT  |               |      |
| THIS IS A COMPUTER AIDED DRAWING AND MUST NOT BE ALTERED MANUALLY. |               |      |