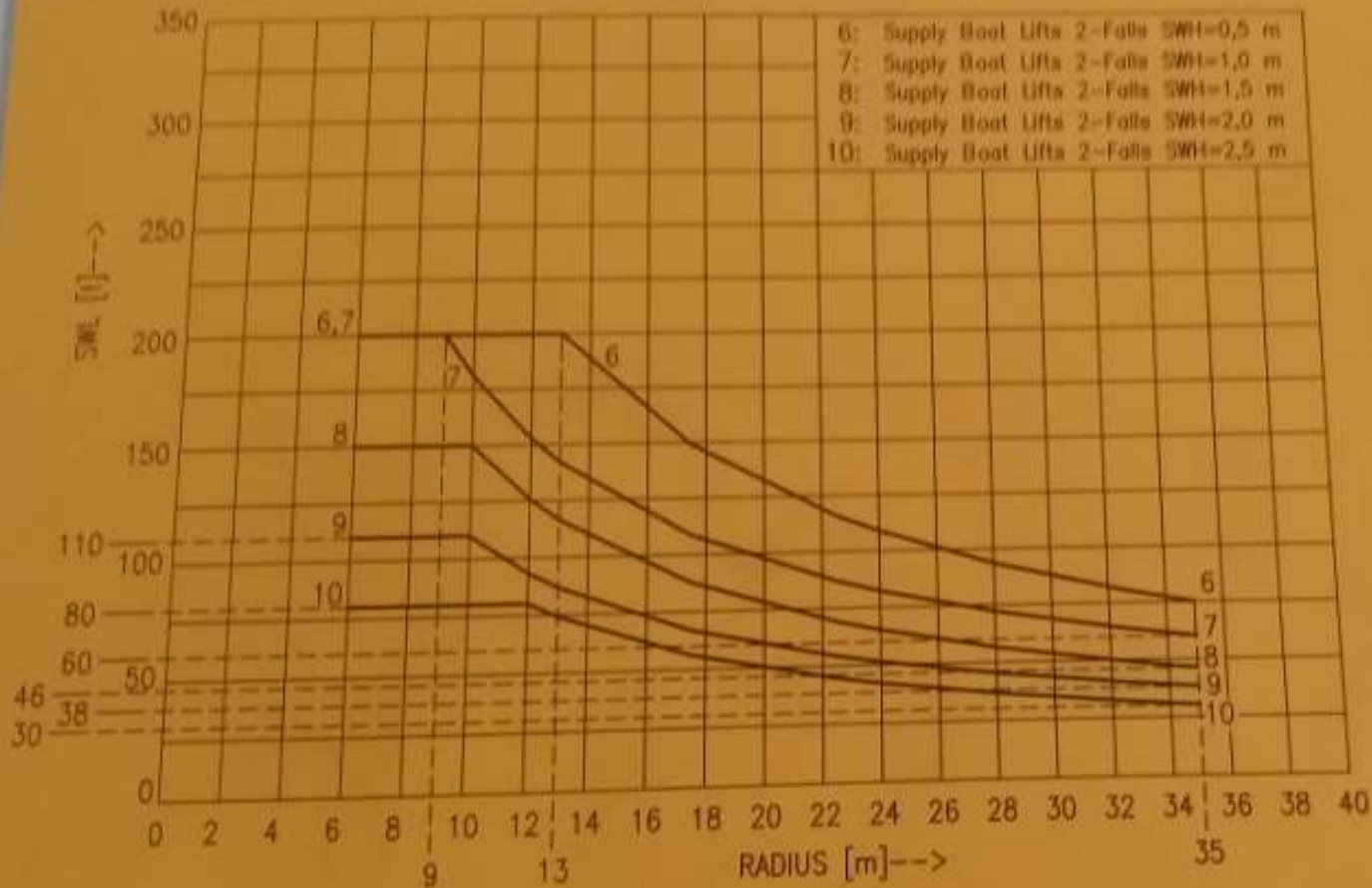


Load/radius curves for supply boat lifts 2-Fall: EHC 300/4500 O.S.



Supply Boat Lifts (see 10)

Radius [m]	Main Hoist			Aux. Hoist		
	1-fall	2-fall	3-fall	1-fall	2-fall	3-fall
0	2200	1100	753	500	8000	8000
9	2200	1100	753	500	8000	8000
13	2200	1100	753	500	8000	8000
35	2200	1100	753	500	8000	8000

SWL : Safe Working Load
 SWH : Significant Wave Height

Environmental conditions :
 Relative humidity : 100%
 Max. operational wind speed : 25 m/s
 Structural design temp. : -10 °C
 Ambient temperature : -10° to +40°C

Harbour Lifts :
 Loading and unloading "Rockwater 2"
 in harbour conditions (e.s. sheltered waters)
 without significant wave motion.

Supply boat Lifts :
 Transferring equipment between supply boats
 and "Rockwater 2" deck area

Subsea Lifts :
 Transferring equipment between seabed and
 "Rockwater 2" deck area.

Supply Boat Lifts :

Net. Area (g)	Vertical boom tip speed (m/s)	SWH (m)	resist factor	Crane front inclination (deg)	Crane side inclination (deg)
0,05	0,25	0,50	1,07 - 1,15	5,00	2,00
0,08	0,30	1,00	1,27 - 1,45	5,00	2,00
0,11	0,35	1,50	1,55 - 1,79	5,00	2,00
0,14	1,00	2,00	1,80 - 2,18	5,00	2,00
0,17	1,25	2,50	2,32 - 2,56	5,00	2,00

	Max. depth [m]	Hook Weight [kg]
Main Hoist : 1-fall	2200	3000
2-fall	1100	8000
3-fall	753	8000
Aux. Hoist :	500	350

Note :
 Use read out of max. boom tip speed and acceleration values on SLJ panel
 and current sea state estimate to decide on which curve to use!

KENZ TYPE : EHC 300/4500 O.S.
 YEAR : 2006
 ORDER : 986.026
 Crane Number : 98-167