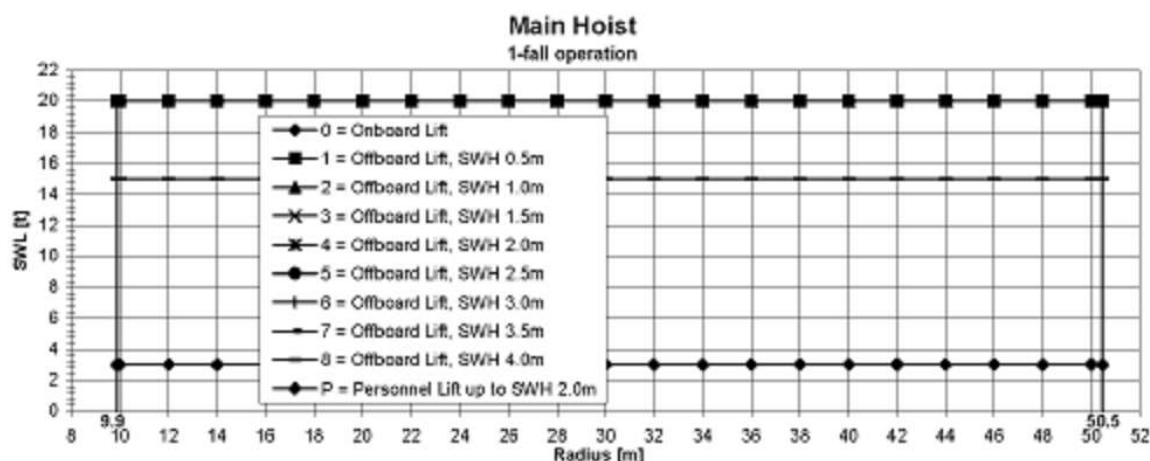


2.3.6. LOAD CHART MAIN HOIST 1-FALL OPERATION

LIEBHERR

BOS 4200 - 40 LITRONIC



Main Hoist: 1-fall Operation

Angle [°]	Radius [m]	SWL [t]									
		0	1	2	3	4	5	6	7	8	P
		Onboard Lift	Offboard Lift								
		SWH 0.5m	SWH 1.0m	SWH 1.5m	SWH 2.0m	SWH 2.5m	SWH 3.0m	SWH 3.5m	SWH 4.0m		
82.8	9.9	20.0	20.0	20.0	20.0	20.0	20.0	20.0	20.0	15.0	3.0
82.6	10.0	20.0	20.0	20.0	20.0	20.0	20.0	20.0	20.0	15.0	3.0
80.2	12.0	20.0	20.0	20.0	20.0	20.0	20.0	20.0	20.0	15.0	3.0
77.7	14.0	20.0	20.0	20.0	20.0	20.0	20.0	20.0	20.0	15.0	3.0
75.3	16.0	20.0	20.0	20.0	20.0	20.0	20.0	20.0	20.0	15.0	3.0
72.8	18.0	20.0	20.0	20.0	20.0	20.0	20.0	20.0	20.0	15.0	3.0
70.2	20.0	20.0	20.0	20.0	20.0	20.0	20.0	20.0	20.0	15.0	3.0
67.6	22.0	20.0	20.0	20.0	20.0	20.0	20.0	20.0	20.0	15.0	3.0
65.0	24.0	20.0	20.0	20.0	20.0	20.0	20.0	20.0	20.0	15.0	3.0
62.3	26.0	20.0	20.0	20.0	20.0	20.0	20.0	20.0	20.0	15.0	3.0
59.6	28.0	20.0	20.0	20.0	20.0	20.0	20.0	20.0	20.0	15.0	3.0
56.7	30.0	20.0	20.0	20.0	20.0	20.0	20.0	20.0	20.0	15.0	3.0
53.8	32.0	20.0	20.0	20.0	20.0	20.0	20.0	20.0	20.0	15.0	3.0
50.7	34.0	20.0	20.0	20.0	20.0	20.0	20.0	20.0	20.0	15.0	3.0
47.5	36.0	20.0	20.0	20.0	20.0	20.0	20.0	20.0	20.0	15.0	3.0
44.1	38.0	20.0	20.0	20.0	20.0	20.0	20.0	20.0	20.0	15.0	3.0
40.4	40.0	20.0	20.0	20.0	20.0	20.0	20.0	20.0	20.0	15.0	3.0
36.5	42.0	20.0	20.0	20.0	20.0	20.0	20.0	20.0	20.0	15.0	3.0
32.1	44.0	20.0	20.0	20.0	20.0	20.0	20.0	20.0	20.0	15.0	3.0
27.0	46.0	20.0	20.0	20.0	20.0	20.0	20.0	20.0	20.0	15.0	3.0
20.9	48.0	20.0	20.0	20.0	20.0	20.0	20.0	20.0	20.0	15.0	3.0
11.8	50.0	20.0	20.0	20.0	20.0	20.0	20.0	20.0	20.0	15.0	3.0
7.8	50.5	20.0	20.0	20.0	20.0	20.0	20.0	20.0	20.0	15.0	3.0

Operational conditions:
 max. static inclination: 1.0°
 max. constant wind speed: 25 m/s

Operational conditions for Personnel Lift:
 visibility: daylight only
 max. constant wind speed: 10 m/s

Operational Limitation acc. EN 13852-1 Annex B.4.1:
 none

Operational Limitation acc. EN 13852-1 Annex C.1:
 none

Minimum recommended Hook Speed:
 SWH 0.5m: 0.09 m/s = 5 m/min
 SWH 1.0m: 0.17 m/s = 10 m/min
 SWH 1.5m: 0.24 m/s = 14 m/min
 SWH 2.0m: 0.30 m/s = 18 m/min
 SWH 2.5m: 0.36 m/s = 22 m/min
 SWH 3.0m: 0.41 m/s = 25 m/min
 SWH 3.5m: 0.46 m/s = 28 m/min
 SWH 4.0m: 0.50 m/s = 30 m/min

Calculation Method:
 General Method based on EN 13852-1

Serial No: 170358
 Installation: MOPU STOR

Manufacturer: LIEBHERR WERK NENZING GMBH
 Austria

Item Code: 950718014
 Revision: 03