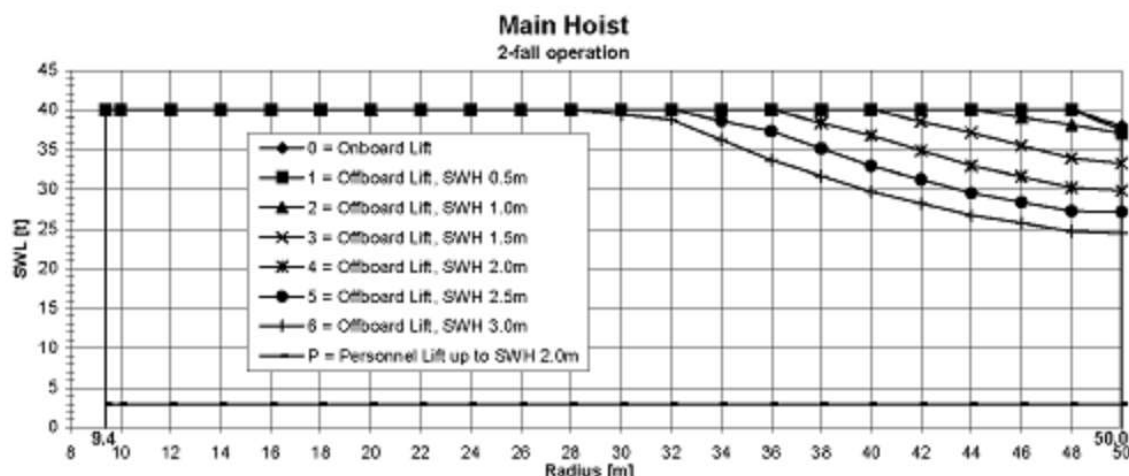


# LOAD CHART MAIN HOIST 2-FALL OPERATION

# LIEBHERR

## BOS 4200 - 40 LITRONIC



**Main Hoist: 2-fall Operation**

Angle [°]	Radius [m]	SWL [t]										
		Onboard Lift	Offboard Lift								Personnel Lift	
			SWH 0.5m	SWH 1.0m	SWH 1.5m	SWH 2.0m	SWH 2.5m	SWH 3.0m	SWH 0.0m	SWH 0.0m		
82.7	9.4	40.0	40.0	40.0	40.0	40.0	40.0	40.0	40.0	0.0	0.0	3.0
82.0	10.0	40.0	40.0	40.0	40.0	40.0	40.0	40.0	40.0	0.0	0.0	3.0
79.8	12.0	40.0	40.0	40.0	40.0	40.0	40.0	40.0	40.0	0.0	0.0	3.0
77.1	14.0	40.0	40.0	40.0	40.0	40.0	40.0	40.0	40.0	0.0	0.0	3.0
74.7	16.0	40.0	40.0	40.0	40.0	40.0	40.0	40.0	40.0	0.0	0.0	3.0
72.2	18.0	40.0	40.0	40.0	40.0	40.0	40.0	40.0	40.0	0.0	0.0	3.0
69.6	20.0	40.0	40.0	40.0	40.0	40.0	40.0	40.0	40.0	0.0	0.0	3.0
67.0	22.0	40.0	40.0	40.0	40.0	40.0	40.0	40.0	40.0	0.0	0.0	3.0
64.4	24.0	40.0	40.0	40.0	40.0	40.0	40.0	40.0	40.0	0.0	0.0	3.0
61.7	26.0	40.0	40.0	40.0	40.0	40.0	40.0	40.0	40.0	0.0	0.0	3.0
58.9	28.0	40.0	40.0	40.0	40.0	40.0	40.0	40.0	40.0	0.0	0.0	3.0
56.0	30.0	40.0	40.0	40.0	40.0	40.0	40.0	40.0	39.4	0.0	0.0	3.0
53.0	32.0	40.0	40.0	40.0	40.0	40.0	40.0	40.0	38.8	0.0	0.0	3.0
49.9	34.0	40.0	40.0	40.0	40.0	40.0	40.0	38.7	36.3	0.0	0.0	3.0
46.7	36.0	40.0	40.0	40.0	40.0	40.0	40.0	37.3	33.7	0.0	0.0	3.0
43.2	38.0	40.0	40.0	40.0	40.0	40.0	38.4	35.1	31.7	0.0	0.0	3.0
39.5	40.0	40.0	40.0	40.0	40.0	38.6	34.9	31.2	28.2	0.0	0.0	3.0
35.5	42.0	40.0	40.0	40.0	38.6	34.9	31.2	28.2	25.7	0.0	0.0	3.0
31.0	44.0	40.0	40.0	40.0	37.2	33.0	29.5	26.7	24.8	0.0	0.0	3.0
25.7	46.0	40.0	40.0	39.1	35.5	31.6	28.4	25.7	24.8	0.0	0.0	3.0
19.1	48.0	40.0	40.0	38.2	33.9	30.2	27.2	24.8	24.8	0.0	0.0	3.0
7.8	50.0	38.0	37.5	37.1	33.2	29.9	27.1	24.5	24.5	0.0	0.0	3.0

**Operational conditions:**

max. static inclination: 1.0°  
max. constant wind speed: 25 m/s

**Operational conditions for Personnel Lift:**

visibility: daylight only  
max. constant wind speed: 10 m/s

**Operational Limitation acc. EN 13852-1 Annex B.4.1:**

For SWL < 5.0 t:  
Hoisting speed 2-Fall: 50 m/min < 100 m/min

**Operational Limitation acc. EN 13852-1 Annex C.1:**

none

**Minimum recommended Hook Speed:**

SWH 0.5m: 0.09 m/s = 5 m/min  
SWH 1.0m: 0.17 m/s = 10 m/min  
SWH 1.5m: 0.24 m/s = 14 m/min  
SWH 2.0m: 0.30 m/s = 18 m/min  
SWH 2.5m: 0.36 m/s = 22 m/min  
SWH 3.0m: 0.41 m/s = 25 m/min

**Calculation Method:**

General Method based on EN 13852-1

Serial No.: 170358  
Installation: MOPU STOR

Manufacturer: LIEBHERR WERK NENZING GMBH  
Austria

Item Code: 950718014  
Revision: 03